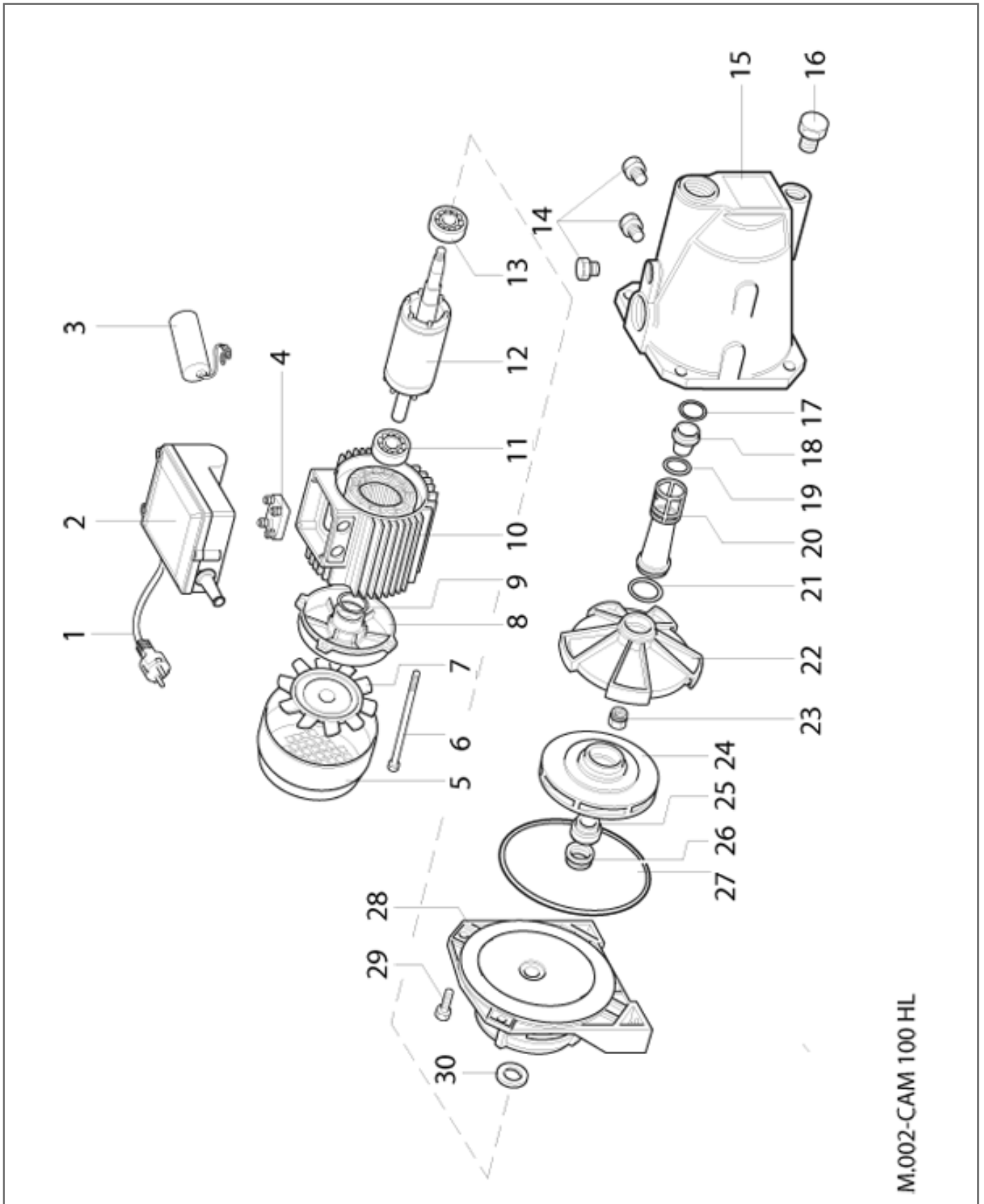


M.006-CAM 100/25 HL

Pos.	Code	Qty	Description	Variant
1	007201394	1	Cable - Cavo	
2	007106231	1	Connector - Raccordo	
3	007103109	1	Tank Flange - Flangia serbatoio	
4	000030861	6	Screw - Vite	
5	007104982	1	Manometer - Manometro	
6	007102903	1	Water bag - Membrana	
7	007103110	1	Valve - Valvola	
8	007104879	1	Tank - Serbatoio	
9	007105281	2	Nut - Dado	
10	007103111	1	Valve cap - Tappo valvola	
11	007105280	2	Screw - Vite	
12	007108278	1	Pressure switch - Pressostato	
13	007106232	1	Flexible hose - Tubo flessibile	
14	007108232	1	Electric pump - Elettropompa	
15	007105370	1	Cable - Cavetto	
16	007250952	1	Gasket - Guarnizione	



M.002-CAM 100 HL

Pos.	Code	Qty	Description	Variant
1	008001029	1	Cable - Cavo	
2	008001043	1	Terminal box cover - Coprimorsettiera	
3	008001033	1	Capacitor - Condensatore	
4	008001025	1	Terminal box - Morsettiera	
5	008004055	1	Fan cover - Copriventola	
6	008001114	4	Screw - Tirante	
7	008004057	1	Fan - Ventola	
8	008004056	1	Shield - Scudo	
9	008001115	1	Spring washer - Anello compensazione	
10	008004050	1	Stator - Statore	
11	008001116	1	Ball bearing - Cuscinetto	
12	008004051	1	Rotor - Rotore	
13	008001116	1	Ball bearing - Cuscinetto	
14	008004070	3	Cap - Tappo	
15	008004052	1	Pump body - Corpo pompa	
16	008004071	1	Cap - Tappo	
17	008004064	1	O-ring - Anello OR	
18	008004062	1	Venturi nozzle - Ugello venturi	
19	008004064	1	O-ring - Anello OR	
20	008004061	1	Venturi tube - Tubo venturi	
21	008004074	1	O-ring - Anello OR	
22	008004060	1	Diffuser disk - Diffusore	
23	008002013	1	Nut - Dado	
24	008004066	1	Impeller - Girante	
25	008004058	1	Mechanical seal - Tenuta meccanica	
26	008004059	1	Mechanical seal - Tenuta meccanica	
27	008002017	1	O-ring - Anello OR	
28	008004054	1	Support - Supporto	
29	008004073	4	Screw - Vite	
30	008002018	1	Packing - Anello paragoccia	