

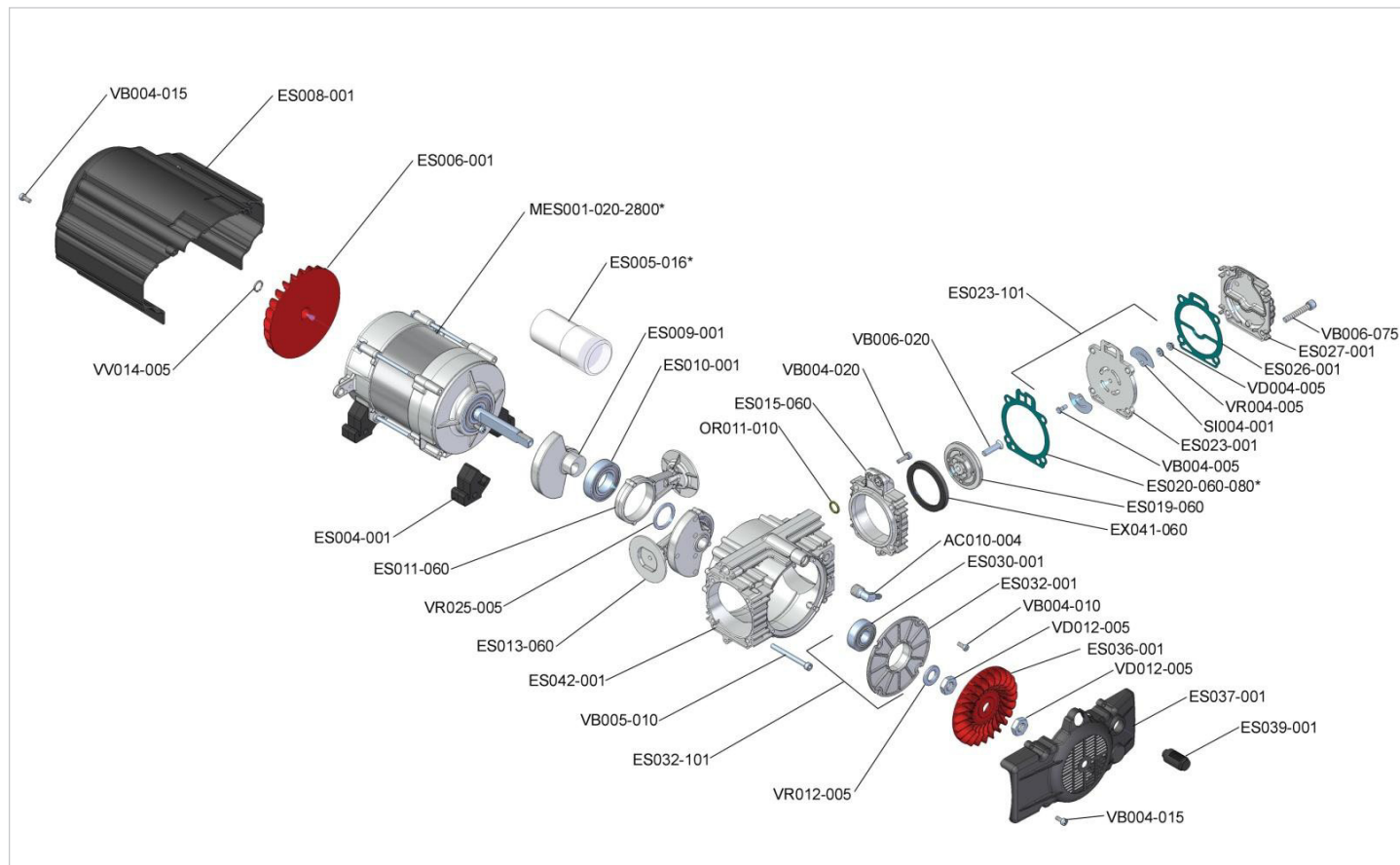
Onderdelentekening (spare parts)

KZ 210-03

Pompgroep 230 Volt 50 Hz (unit pomp 230 Volt 50 Hz)

Bestand (file) ES001-002 Rev.01

Datum (date) 20/03/2012



| Code (code) | Omschrijving (description) | Aantal (quantity) |
|------------------|---|-------------------|
| AC010-004 | Pipe fitting "L" | |
| ES004-001 | No-vibration rubber | |
| ES005-016 | Condenser 16 µF | |
| ES006-001 | Plastic fan of electric motor "RED" | |
| ES008-001 | Plastic cover fan and motor "BLACK" | |
| ES009-001 | Crank | |
| ES010-001 | Bearing | |
| ES011-060 | Connecting rod 60 mm | |
| ES013-060 | Connecting rod complete | |
| ES015-060 | Cylinder 60 mm | |
| ES019-060 | Piston top 60 mm | |
| ES020-060-030 | Cylinder 60 mm gasket 0,30 mm | |
| ES020-060-050 | Cylinder 60 mm gasket 0,50 mm | |
| ES020-060-080 | Cylinder 60 mm gasket 0,80 mm | |
| ES023-001 | Valve plate | |
| ES023-101 | Valve plate complete | |
| ES026-001 | Head gasket | |
| ES027-001 | Head | |
| ES030-001 | Bearing | |
| ES032-001 | Flange | |
| ES032-101 | Flange with bearing | |
| ES036-001 | Plastic fan of compressor "RED" | |
| ES037-001 | Plastic cover fan "BLACK" | |
| ES039-001 | Suction filter | |
| ES042-001 | Monoblock | |
| EX041-060 | Piston seal | |
| MES001-020-28000 | Electric motor 0,7 Hp 230 Volt 50 Hz 2800 | |
| OR011-010 | O-ring | |

| Code (code) | Omschrijving (description) | Aantal (quantity) |
|-------------|----------------------------|-------------------|
| SI004-001 | Valve | |
| VB004-005 | Screw | |
| VB004-010 | Screw | |
| VB004-015 | Screw | |
| VB004-020 | Screw | |
| VB005-010 | Screw | |
| VB006-020 | Screw | |
| VB006-075 | Screw | |
| VD004-005 | Nut | |
| VD012-005 | Nut | |
| VR004-005 | Washer | |
| VR012-005 | Washer | |
| VR025-005 | Washer | |
| VV014-005 | Safety ring | |

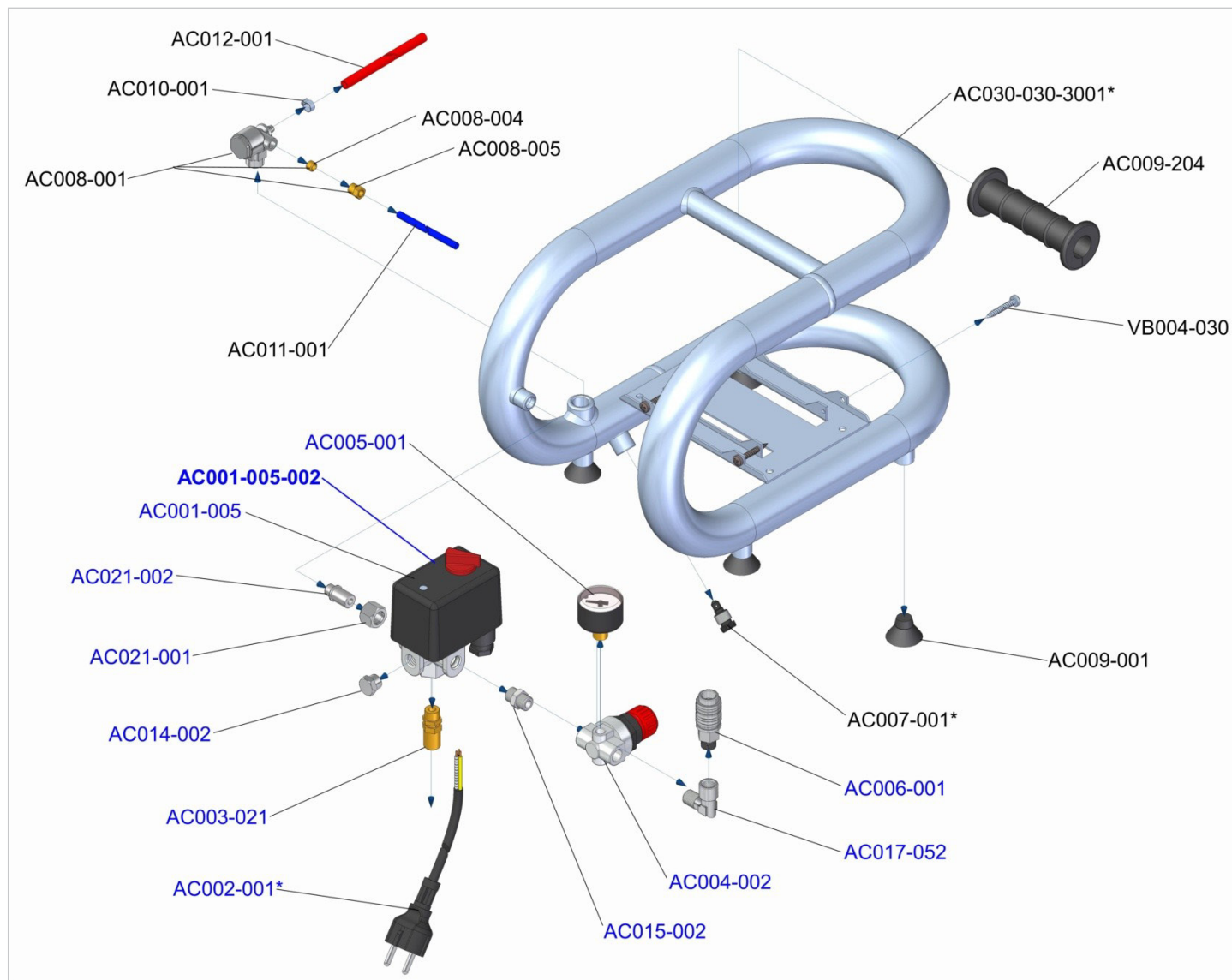
Onderdelentekening (spare parts)

KZ 210-03

Tank met accessories 230 Volt 50 Hz (tank with accessories 230 Volt 50 Hz)

Bestand (file) ES002-001 Rev.00

Datum (date) 12/02/2011



| Code (code) | Omschrijving (description) | Aantal (quantity) |
|---------------|---|-------------------|
| AC001-005 | Pressure Switch 1/4" (start valve open) | |
| AC001-005-002 | Pressure Switch complete for ESPRIT 3T | |
| AC002-001 | Pin plug SHUKO 1,5 m | |
| AC003-021 | Safety valve 10 BAR | |
| AC004-002 | Pressure regulator MIGNON Pos.2 | |
| AC005-001 | Manometer 40 mm 1/8" Bar/Psi | |
| AC006-001 | Universal Coupler 1/4" Male | |
| AC007-001 | Plastic screw for condensate drain | |
| AC008-001 | Not return valve 3/8" for tube Rilsan | |
| AC008-004 | Ogive for tube blue Rilsan | |
| AC008-005 | Nut for tube blue Rilsan | |
| AC009-001 | Rubber foot | |
| AC009-204 | Rubber knob | |
| AC010-001 | Clip for tube 8,5 mm | |
| AC011-001 | Blue Rilsan tube for ESPRIT 3T | |
| AC012-001 | Red Rilsan tube for ESPRIT 3T | |

| Code (code) | Omschrijving (description) | Aantal (quantity) |
|----------------|----------------------------|-------------------|
| AC014-002 | Closure plug | |
| AC015-002 | Nipple | |
| AC017-052 | Pipe filling "L" | |
| AC021-001 | Nut for connection | |
| AC021-002 | Connection | |
| AC030-030-3001 | Tank ESPRIT 3T "RED" | |
| VB004-030 | Screw | |