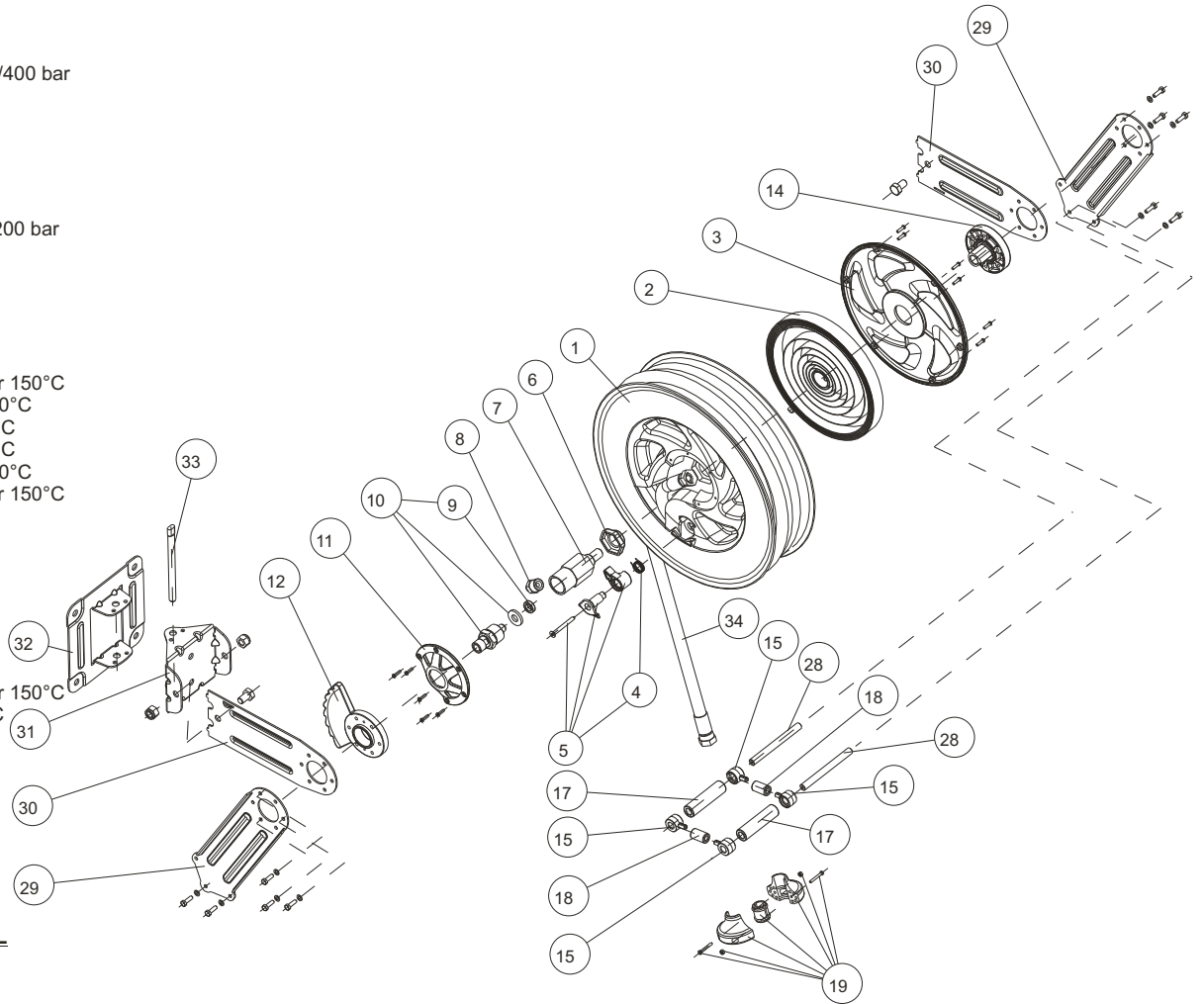


POS CODE REF.TYPE

1	327116	
2	262892	60/150/200/400 bar
	262894	20 bar 3/8"
	262896	20 bar 1/2"
3	327112	
4	262862	
5	704801	
6	327125	
7	422100	20/60/150/200 bar
	422102	400 bar
8	222100	3/8"
	222101	1/2"
	222102	1/4"
	230142	D.12
	230144	D.14
9	340100	150/200 bar 150°C
	340105	20/60 bar 40°C
	340110	400 bar 40°C
10	704802	400 bar 40°C
	704803	20/60 bar 40°C
	704804	150/200 bar 150°C
11	542120	
12	542100	
13	327155	
14	542110	
15	542125	
16	422150	
17	327120	
18	327121	
19	704805	
	323326	150/200 bar 150°C
	323327	60 bar 40°C
	327010	20 bar 3/8"
20	327100	20 bar 1/2"
21	327156	
22	327140	
23	327165	
24	620140	
25	462130	
26	706080	
27	422160	
28	454110	
29	454120	
30	454130	
31	454100	
32	462140	
33		

OPTIONAL



MODEL	TURNS
3/8" 20 bar	14
1/2" 20 bar	16
1/4" 400 bar	5/6
3/8" 60/200 bar	5/6
1/2" 60/150 bar	5/6

Fig. 13

